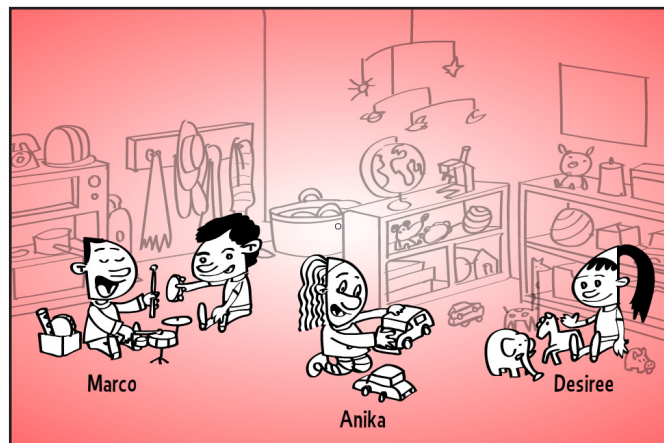


Being Responsive to Children and Families: *Responsive Learning Experiences*

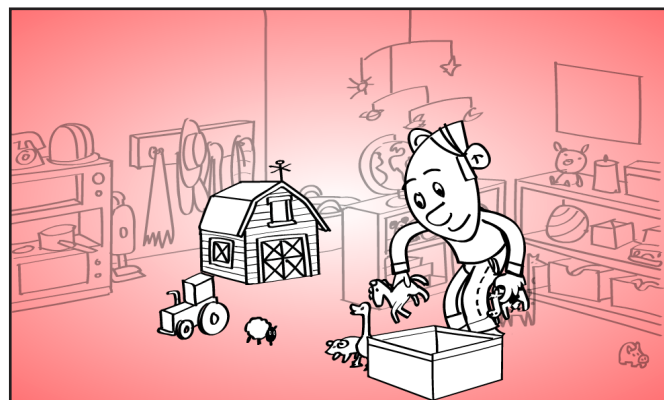
RESPONSIVE LEARNING EXPERIENCES IN ERIC'S CLASSROOM

Let's look at an example of a responsive learning experience in Eric's classroom.

Facilitator: *Eric observes that Desiree often chooses to play with animals, Marco enjoys music, and Anika frequently plays with cars and trucks. Eric also knows that these children have different levels of expressive language.*



Volunteer: *Eric decides to set up a barn with farm animals and tractors. He will introduce the children to these new materials during circle time. To promote children's expressive vocabulary, Eric will ask some children to identify the animals and others to describe the animals. The group will sing "Old MacDonald," and Eric adapts a verse to include farm vehicles.*



Turn to a partner next to you and discuss the following question:

How does Eric consider the children's interests and development when planning this learning experience?
