

## Supporting Referral and Evaluation: *The Referral Process*

### REFLECTING ON THE REFERRAL PROCESS

Think about the families in your program.

Identify one or two ways you can strengthen your communication and collaboration with families when discussing concerns from the developmental screening results.

---

---

---

What information would be helpful to share with families who are beginning a diagnostic evaluation process for their child?

---

---

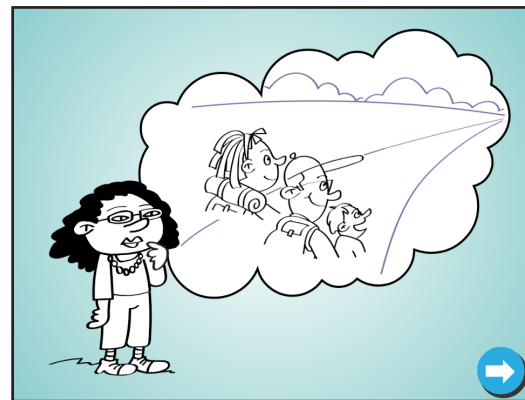
---

Where can you get this information?

---

---

---



Make a plan for checking in with families throughout the process.

---

---

---